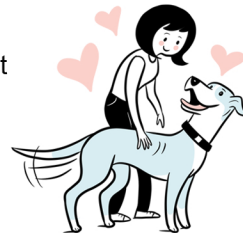


CONSTRUCTIONAL AFFECTION

Interaction Guidelines

This is a visual guide for anyone interacting with “hyperactive,” “jumpy,” “mouthy,” or “scratchy” dogs who really want to interact with us but don’t know how to ask for and receive affection and interaction.
(Never use this guide with dogs showing signs of fear or aggression)



How to Provide Affection “Conjugately”

Our affection and interaction are **constantly moving and synchronizing** with the dog’s behaviors. Affection/interaction (reinforcement) is always available, and its magnitude changes fluidly with the dog’s behaviors. This helps our dogs learn how their moment-to-moment behaviors directly control the amount of affection and interaction they receive. We pet with long, soft strokes using a soft tone of voice.



GOAL:

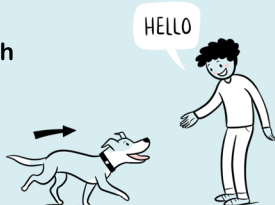
To have your dog calmly approach, and sit or lie down to ask for and receive affection



**If you want to proceed to the Affection Loop, make sure the dog can sit/lie down for at least 30 seconds while you pet them*

When DOG approaches within arm’s reach on their own...

*We don’t lure with treats, chase, or force them to interact with us



All four paws on the ground



PET with ONE HAND

If DOG leaves...



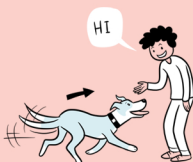
BYE!
SEE YOU AGAIN



... with “Undesirable” Behaviors:

JUMPING

DOG learns to keep four paws on the ground to ask for and receive our affection



Paws off the ground, paws on body



STOP PETTING and WAIT

Paws off body, returning to the ground...



SLOWLY MOVE HANDS toward DOG

PET with ONE HAND



Continue PETTING



MOUTHING

DOG learns to sit calmly to ask for and receive our affection



Head forward, open ‘bitey’ mouth



STOP PETTING, REMOVE HANDS, and WAIT

Head returning over their shoulders...



SLOWLY MOVE HANDS toward DOG’S MOUTH
*like giving water to the dog



PET with TWO HANDS

Continue PETTING



When DOG sits...



PET with TWO HANDS

When DOG lies down...



PET with TWO HANDS and pour affection on them!

kiss, hug, talk sweetly to them, with lots and lots of loving!

We try to have **no delay** in delivering our affection in relation to our dog’s behavior. **It is the dog’s behavior that is controlling the magnitude and duration of our affection.** This is key for immediate behavior change and to achieve mutually enjoyable interactions and relationships.

